

# How to take Photo < Wheel loader>

**【take Photo and Inspection    (Photo number MAX 70)】**

Inspection Point	Outline	About Photo Number
Machine's Appearance	Right oblique Front／Left oblique Front／Right oblique Rear／Left oblique Rear and Feature	5
Engine	Radiator, Oil leak, Water leak, Blow-by, etc.	10
Upper Structure	Working-units, Operation-Device, Mater, Hydraulic-system	20
Under Structure, Under Carriage	Track-frame, Travel-device, Shoe, Roller, etc.	20
Extra Parts, Attachment	Parts, Attachment	4
Plate, Engraved		6

**Please be sure to take a Photo of Malfunction**

## **【Organizing Photo and E-Mail】**

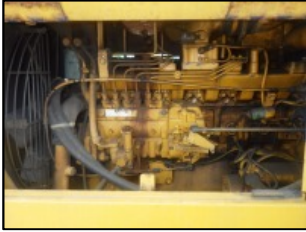
Please refer “Entry Guide-④Organizing Photo”

## --- Photo Sample---

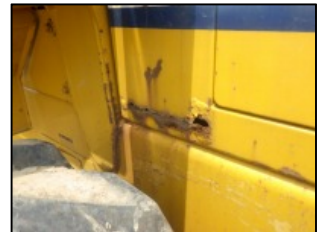
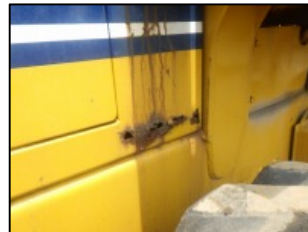
### Appearance



### Engine

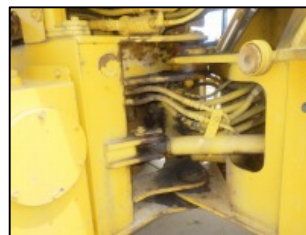
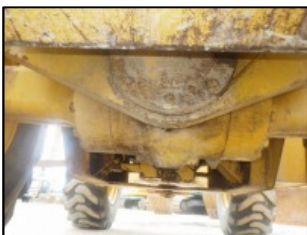
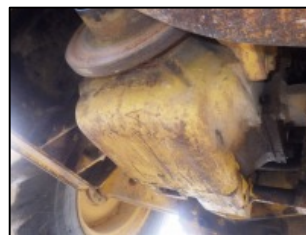
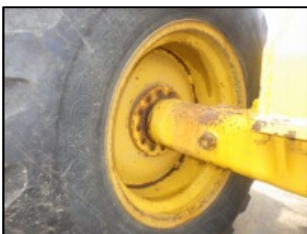
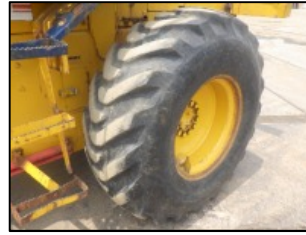


### Upper Structure (Working-units, Operation-Device, Mater etc.)





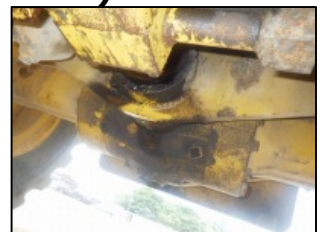
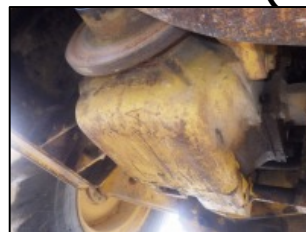
## Under Structure, Under Carriage



## Plate, Engraved No.



## Malfunction(Oil leak)



Not Extra parts